

Bus Shaped Keyring 80x30mm [KRBUS]

Description: Bus Shaped Keyring

Dimensions: 80mm x 30mm x 3.7mm

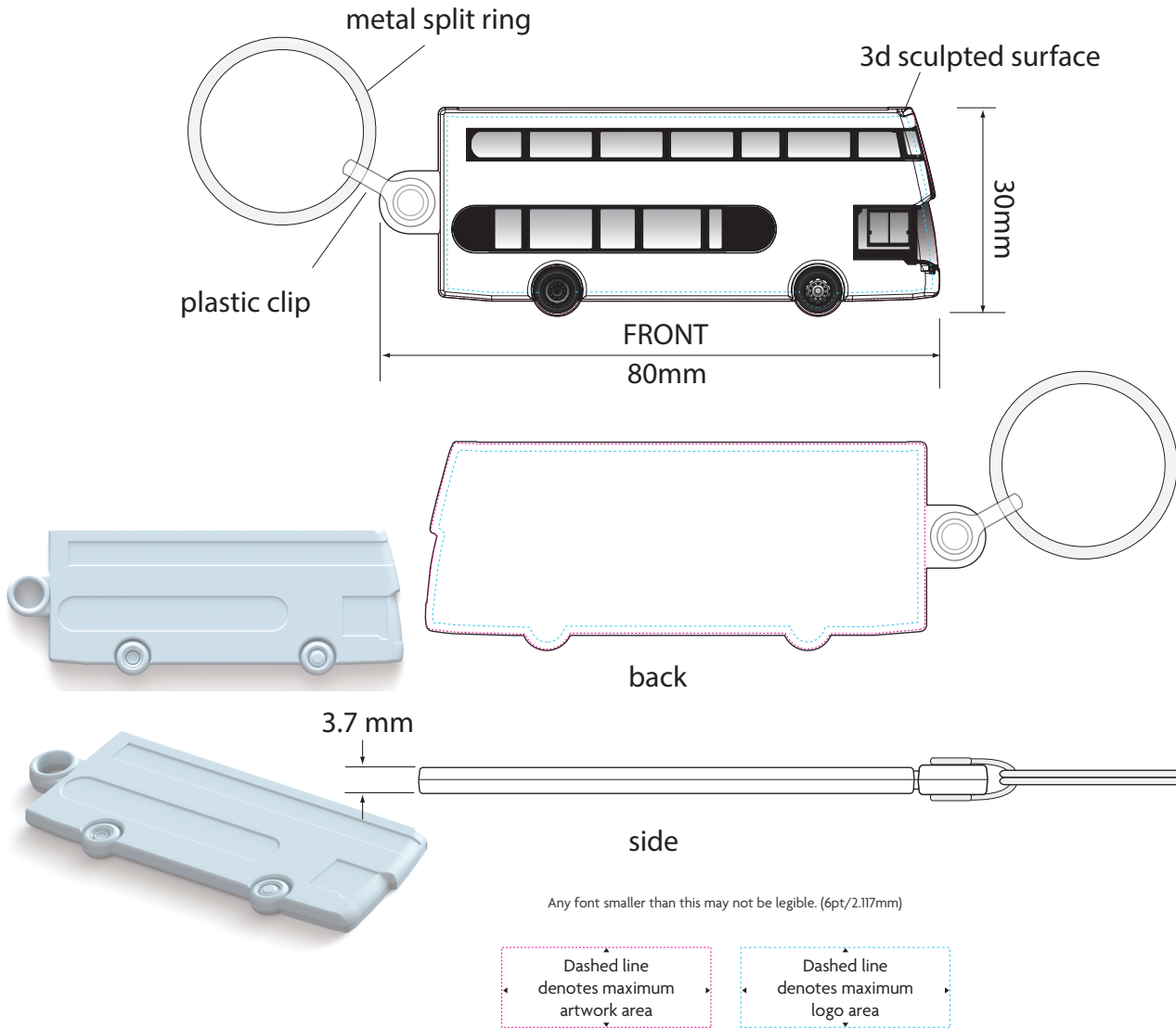
Logo Print Area: 80mm x 30mm

ORDER: XXXXX

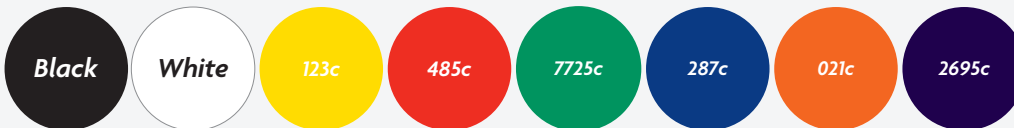
**ARTWORK
TEMPLATE**



Minimum size for QR codes (10mm).



RECYCLED
STANDARD
COLOURS



R+
BIODEGRADABLE
RANGE



Notes on Text and Colour.

Any font smaller than this may not be legible. (6pt)

Please note: If artwork is supplied and approved below this size, we cannot take responsibility for wording that is illegible after printing. Final printed colour may differ from this proof.

In recycled standard colours, flecks may occasionally appear due to formulation and recycling techniques.

Where Pantone references are provided we will endeavour to match them as closely as possible within the limitations of the CMYK digital printing process.

